

Rise Impact Report

2022-2023





Introduction

Welcome to our annual Social Impact Report.

2022-2023 has been another busy year for Rise Construction Framework as we continue our work with existing and new public-sector partners.

As we exited the pandemic the country was gripped by global events that have reached not only into the heart of our communities but directly into our homes with many households plunged into food and fuel poverty.

Never has there been more need for social businesses like Rise; a small but dynamic business, we were able to react quickly to support vulnerable households across the region and as demand increases our vital work continues.



“How the public sector choose to procure services is becoming more and more important. Demand on services are high and finances are under pressure; value for money and social value go hand in hand and I am proud to be part of an organisation that makes public sector money work harder by re-investing profits into communities. Long before social value was a requirement Rise was changing through social procurement and despite the challenges that come our way this remains at our core.”

Sara Lawton - Director

Contents

Section 1 - Rise Social Impact

Section 2 - Rise Supply Partner Social Value

Section 3 - Social Impact Analysis



Section 1: Our Impact

Rise has a social mission of tackling deprivation and poverty.

Section 1 provides some case studies of how we achieve our mission by re-investing public sector money into initiatives that make communities safer, stronger, healthier and economically active.

Rise investments are in addition to social value delivered by our supply partners and we hope you enjoy reading about the different made across our communities.

Our investments make public-sector money work harder and enable us to fund social innovation that impacts across the communities our public-sector partners serve.



Rise Community Investment

Community Projects
Supported **25**

Beneficiaries
2,974

Volunteer Hours
Donated **1,688**

Social Investment
Value **£90,000**

Social Impact

2022 - 2023

Social Return On Investment
£17.07 per £1 invested

Social Impact Generated
£1.54 million

Thrive Careers Hub

Thrive was founded by Rise in 2020 as our first in house social initiative and was launched to support some of the most vulnerable young people across the Liverpool City Region.

Thrive looks and feels like a coffee shop but is a dedicated safe space for care experienced young people to meet with the adults who care for them whilst accessing specialist wrap around support.

At Thrive we believe all young people have the right to live happy, safe and fulfilling lives; and we have created a unique service that is impacting on the lives of hundreds of young people. Our investment into Thrive is not only financial, with the whole Rise team offering time and resources to ensure Thrive is fully supported.



Thrive Success:

4,403 visits by young people

828 visits by support workers

150 young people into work

Specialist Creche Worker

Rise awarded **SafeNet** community funding to cover the cost of employing a Specialist Crèche Worker. The DA trained creche worker responds to all behaviours children may display that are associated with living in an abusive household. She works alongside SafeNet's children and young people worker supporting children on a 1-2-1 basis aiding their development and growth. In addition to supporting the children the role allows mothers to attend workshops to help them live independently, free from abuse.

"I am more aware of Domestic Abuse and it's effects on me. I feel safe. I have achieved immigration status. I am more financially independent"

"My children and I would be living in an abusive environment with no security and safety and no money for essentials..."

- **32 Adults and 61 Children accessed support**
- **100% of adults strongly agreed that the service was non-judgemental and that it had made a positive difference in their lives.**



SafeNet is a Domestic Abuse (DA) charity delivering support to victims/survivors across the Northwest. The organisation gives support to survivors of DA through 24-hour refuge provision, therapeutic support, re-settlement support as well as Outreach, IDVA services and education. The service is accessible 365 days a year by adults and children affected by DA.

The Archer Project

During a time when the charity was struggling for funding, Rise awarded **The Archer Project** community funding to aid in the continuation the delivery of their training and events. Rise funding covered the costs associated with all sessions delivered during December 2021.

A total of 215 individuals benefitted from their support this year, helping individuals to build confidence, increase self-esteem, improve overall health and wellbeing, whilst building social skills through team activities.

“Without the support of Rise, we would have needed to make cutbacks within our service, either by limiting our menu or turning some people away. This was vital over the winter months when people were in desperate need of a hot meal after a night on the streets. Equally, being able to serve a two-course dinner everyday ensured that our beneficiaries were properly sustained too.” – Tim Renshaw, CEO



Chapter Mental Health

Rise awarded Chapter community funding to cover the costs associated with delivering Wellbeing Walks for Chapter users across the West Cheshire area.

The project saw the delivery of 26 Wellbeing Walks carried out over a 6-month period from May 2022. Across the duration of the project 20 individuals accessed the walk, attending an average of 5 sessions each resulting in over 100 attendances in total.

The activities delivered supported some of the most marginalised and vulnerable people living with severe mental illness in the Chapter community.



Chapter is a charity dedicated to improving the lives of people experiencing mental ill-health in Cheshire, providing vital lifesaving support to over 300 people a year. Chapter assists people who need help in regaining confidence, accessing learning and employment, and moving towards fulfilling their life goals. Providing a pathway of support that gives hope, the opportunity to make friends, and gain new skills.

The Walton Centre- Home from Home

The Walton Centres " Home from Home" facility is an 8 bedded relatives' accommodation unit which allows families of critically ill patients to stay on site while their loved one is being treated at The Walton Centre hospital. Walton Centre patients come from across the Northwest, North Wales and the Isle of Man, with some patients with complex disorders travelling from all parts of the UK for specialist treatments meaning the comfort of the homely environment for families to stay in is vitally important.

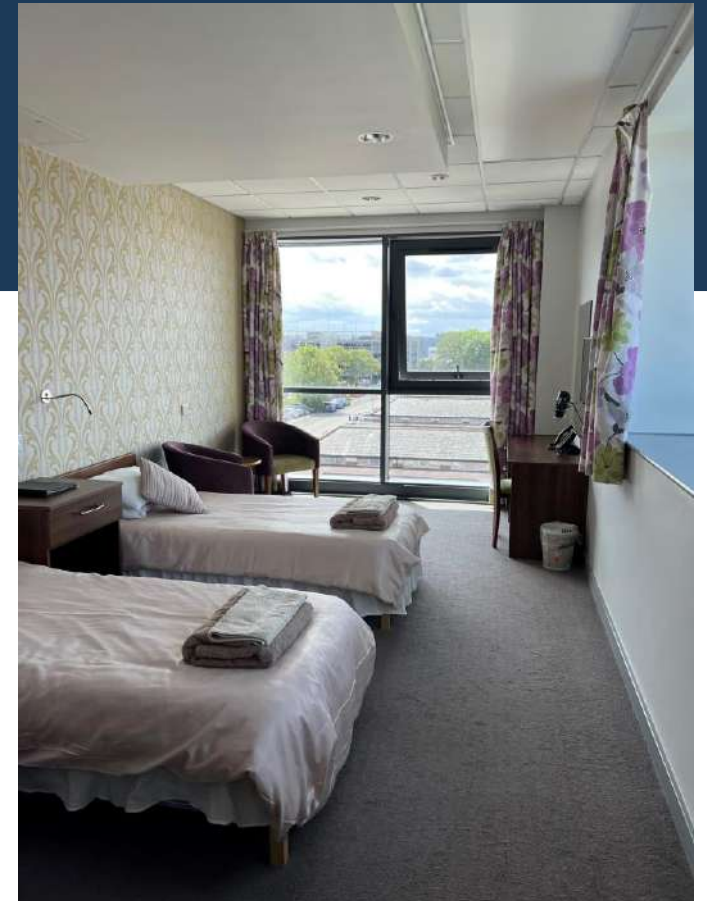
Rise funding provided to the Home from Home project has allowed 84 families to for an average of 3 nights ensuring they can be close to their loved ones during this vital time.



Thank you so much for allowing me to stay here to be with my dying husband, he had a life-threatening injury and was air-lifted from the Isle of Man to here.

I would not have been able to stay with him had it not been for the Walton Hospital and hospital hotel. A 5 star stay, beautiful boutique décor and superb room. Thank you for saving me as well. I will be forever grateful.

Eve- Service Users



Warrington & Halton Youth Diabetes Service

Warrington and Halton Teaching hospitals charity aims to enhance their patients' experiences, recovery, and clinical outcomes by providing comforts, care, and experiences beyond which the NHS itself is unable to provide.

Rise supported the youth diabetes services through the purchase of games and equipment for youth activities in addition to a shed for much needed storage. Rise also purchased gardening equipment to enable the charity to set up an onsite gardening initiative at Warrington Hospital.

So far, the equipment provided to the youth diabetes services has been used during 3 onsite Patient Support Groups and 1 Newly Diagnosed Support group, with the activities being accessed by 23 patients and their families



“Having fun activities for the children to play and having all the resources makes Diabetes feel a lot less robotic and meeting new people makes us feel less alone with Diabetes.”

Patient Parent

“I love the support group because it makes me feel normal and it’s fun”

Young Person

Rammy Men

Rammy Men is a mental health charity based in Bury, Greater Manchester that supports individuals from across the community in managing their mental health and helping to provide them with a sense of purpose. Rammy Men builds relationships by bringing people together through community activities that anyone can get involved in. They also offer counselling, run an annual suicide awareness conference, work with multiple partners to provide an extensive referral network and operating their own helpline.

Rise awarded community funding to Rammy Men to provide 1:2:1 counselling sessions for men and women accessing the service.

Between November 2022 and March 2023 the funding allowed Rammy Men to deliver 229 hours of 1:2:1 counselling and 82 hours of peer supported group sessions.

76 individuals have directly benefitted from Rise funding provided to Rammy Men.



“Without Rammy Men, and the support and friendships it has given me, I doubt I would be around today. It gave me a reason to face the future, and gave me a chance to help others in similar, and even more complex situations.”

Service User

Liverpool Homeless Football Club

LHFC's mission is to provide health & wellbeing opportunities to the most vulnerable in our community and assist them to achieve their full potential through engaging in sports and activities.

Rise community funding provided to LHFC to fund the delivery of 12 months of activities for vulnerable women in the community.

Activities include Walk & Talk sessions which aim at supporting women who maybe socially isolated or find themselves living with domestic abuse, homelessness or mental health issues, providing the opportunity to get out and have a few hours with other women, chatting walking in a safe group including lunch.

Funding was also provided to fund four quarterly women's football tournament's raising awareness of Breast cancer, WADA (Women Against Domestic Abuse), Alzheimer's and Period Poverty. The tournaments raise important issues which effect all women and as such the tournaments are open to groups individuals outside of LHFC.



"A big thank you to Rise, who without their sponsorship none of this would be possible"

LHFC CEO

The Cost-of-Living Crisis

The past 12 months has seen many households struggling and having to choose between heating or eating.

At Rise we wanted to find quick practical ways in which we could help ease peoples' burdens so in addition to our investments that get to heart of some of society's most complex issues we worked with partners to provide immediate, practical ways to help households in need.

Projects that we have supported to help tackle the cost of living crisis include:

- Funding hot drinks in warm hubs
- Foodbank donations
- 500 winter care packs distributed across Merseyside
- Energy efficient community cooking classes
- 100 winter care packs distributed across Burnley
- 1000 £25 fuel vouchers distributed across Greater Manchester
- Emergency fuel vouchers distributed across North Liverpool
- 33 vulnerable families Christmas food hampers
- Pensioner Christmas Lunch



Helping Hands

Rise awarded Helping Hands community funding to help carry out capital works needed to improve the space from where they deliver their vital services. The funding has helped make the space more accessible to the wider community and enabled the extension of their timetable of activities.

Rise also award community cost of living funding to cover the costs of the food bank for a period of 2 months. During this time, the service helped approximately 50 households per week with over 250 individuals directly benefiting from this funding.



Helping Hands was set up during the pandemic to support members of the community who were isolated and needed support. Since its inception Helping Hands has evolved and as well as operating a foodbank service that delivers to people in need across their community they also provide social activities to help to bring members of the community together.

Helping Hands mainly operate across Orford, Poplars and Hulme, with volunteers coming from all over Warrington. The 20 strong volunteer team selflessly give up their time each week to make a difference to the lives of those in the community.

Winter Care Campaign

With the country set to face a tough winter due to the ongoing cost-of-living crisis, Rise wanted to support some of the many vulnerable members of our community. Seeing the need for fast and practical action, Rise purchased 500 care packs to help vulnerable individuals stay warm in their homes.

To aid with identification of households in need and the distribution of the packs across Merseyside we partnered with Merseyside Fire & Rescue Prevention Teams. The prevention teams at Mersey Fire were able to distribute the packs during their daily activities working in the heart of our communities; this partnership was crucial to distributing the packs prior to the cold front of winter.

We would like to thank all at Mersey Fire for helping us to reach the most vulnerable.



Each pack distributed includes:

- Thermal Hat
- Thermal Gloves
- Thermal Scarf
- Thermal Socks
- Hot Water Bottle
- Thermal Travel Cup
- Fleece Blanket

Walton Value Community Shop

In September 2022, Rise purchased and provided 100 slow cookers and awarded community funding to Walton Vale Community Shop to enable the delivery of healthy, low cost and energy efficient cookery lessons. Community funding was also granted to provide an emergency fuel fund for households in immediate need.

The project saw the delivery of 11 slow cooker workshops delivered to 100 members of the community with all households who accessed the sessions receiving a slow cooker, recipe book and ingredients to recreate the workshop dishes. The delivery of these sessions has not only helped people to cook more nutritional meals but has been vital in helping to reduce the costs of both food and fuel.



Rise funding granted to provide an emergency fuel hardship fund was accessed by members of the community throughout the winter and saw the distribution of 221 fuel vouchers valued between £5 and £25.



“Thank you for a great session last night, really looking forward to trying out some of the recipes whilst saving energy cooking them”

Dawn, Service User

Recognition Of Our Work



This year has been a very special year for the team at Rise winning FOUR National Awards.

2023 alone has seen the team awarded the Built Environment Social Value Trailblazer Award, the Good Small Business Community Enterprise Award, the Go Awards (excellence in procurement) Social Value Award the SME Social Value Leadership Award at the National Social Value awards in London.

Founder and director Sara Lawton has also been recognised with the High Sherriff Award for Services to Communities.

Grahame Steed, chair of the GO Awards judging panel:

"In a year when the standards of the UK National GO Awards were higher than ever, Rise 's success is all the more significant. The recognition they are receiving now is fully deserved."

Section 2:

Supply Partner Impact

This year we have worked with Clients and Suppliers from across the Northwest, North Wales and Yorkshire in the delivery of Framework Projects.

In addition to the Social Impact generated through Rise investment our supply partners also provided project based Social Impact and Charitable activities on behalf of clients and their communities.



Rise Supply Partner Social Value

Workforce on Rise Projects
1,700

Jobs Created or Sustained
115

Charitable Monies Raised
£123,816

Volunteer Hours Donated
1,897

Learning Hours Accessed
1,764

Individuals Trained
578

Experience Days Gained
977

Individuals Gaining Work
Experience **74**

Social Impact

2022 - 2023

**Social Impact Generated
£9.93 million**



Supply Partner Social Value- Employment

1,700 Personnel have undertaken activities to help deliver quality projects for our clients this year

42 New Job opportunities were created as a result of contracts secured via Rise, contributing directly to regional economy and sustainability of the sector

73 Individuals sustained their employment due to Rise contracts being awarded



Supply Partner Social Value- Training & Education

578 individuals of supply partner workforces have accessed training to improve their skill set

Over **80** training programmes or courses have been delivered

1,764 days of learning have been completed

197 individuals who are either Apprentices, Trainees or Graduates have undertaken or contributed to work on our framework contracts

74 individuals have gained un-paid work experience on site

A total of **977** experience days being delivered by the supply partners working on contracts



Supply Partner Social Value- Environmental Impact

73% of supply partners adopt a formal Carbon Reducing Environmental commitments

62% of construction fleet are Euro6/LEV/ULEZ compliant

31% of supply partner workforce use greener forms of transport to travel to and from work

Section 3: Overall Impact

Sections 1 and 2 of our report highlight the impact we have as a framework and the impact delivered by our supply partners.

Section 3, demonstrates the impact of our collective efforts which enables us to amplify our social outcomes - helping to level-up communities.

Importantly, our social value report is created independently to ensure we do not over-calculate any social return on investment.



Rise Overall Social Impact

Social Impact Generated
£11.47 million

Individuals Benefitting
4,057

Social Impact

2022 - 2023

Volunteer Hours Donated
3,585

Charitable Contributions
Raised **£180k**

Beneficiaries

4,057 individuals have been directly impacted by either the Social Investments we made this year or the Social Value activities our Supply Partners deliver on behalf of clients and their communities.

From creating jobs, offering training, giving work experience, creating new spaces and funding community projects to support the most disadvantaged, Rise and all of our suppliers are continually making an impact through our work.



Volunteering

The Rise team have contributed **1,688** hours of their time to help local projects.

Framework Suppliers staff have contributed **1,897** hours toward client related social value projects.

A total of **3,585** of volunteer hours have been donated to good causes and communities across the Region.



Fundraising

This year Rise have held events, arranged and participated in fundraisers and helped to promote and enable charitable activities. Through these activities our team have raised **£56,270** going directly into third sector organisations and activities.

Rise Supply Partners fundraising and charitable contributions have resulted in the raising of **£123,618** for causes across the North West, North Wales and Yorkshire.

This years combined total raised by Rise and our Supply Partners is almost **£180k** helping to benefit many individuals.



Final Words

*“This report recognises the work of Rise Construction Framework, it’s Supply Partners and the public-sector organisations who have chosen to buy from a purpose driven business. Thinking about **how** to procure alongside what to procure is extremely important and we would like to thank the capital & estates teams along with their procurement colleagues who are changing lives **by procuring with purpose for the wider benefit of our communities.**”*

Sara Lawton- Director



Contact Us

Rise Construction Framework

Studio D Digital House

44 Simpson Street

Liverpool

L1 0AX

✉ info@rise-framework.com

☎ 07463 540 183

🌐 www.rise-framework.com

🐦 @riseframework

🌐 Rise Construction Framework

